

Alta Data Technologies  
PC104P-1553  
Connector and Pin-Out Information  
8 Oct 2007

See Last page for Card Mechanical Outline

### Mating Connector Information

Mating Connectors for 10-pin 1553 Headers: Molex 90142-0010

Mating Connectors for 16-pin Aux Header: Molex 90142-0016

Recommended socket contacts for mating connectors (22-24AWG): Molex 16-02-0103

<http://www.molex.com>

### Connector Function

J1/ J2 = ISA Pass Through (Per Spec)

J3 = PCI Connector (Per Spec)

J4 = 10-Pin 1553 Channel One Signals

J5 = 10-Pin 1553 Channel Two Signals (Optional)

J6 = 10-Pin 1553 Channel One Signals (Optional)

J7 = 10-Pin 1553 Channel One Signals (Optional)

J8 = 16-Pin Auxiliary Signals

### J4-8 Pin-Outs

J4-Channel 1

HDR Pin	Signal	HDR Pin	Signal
1	1553 CH 1A+	2	1553 CH 1B+
3	1553 CH 1A-	4	1553 CH 1B-
5	1553 SHIELD 1A	6	1553 SHIELD 1B
7	TRIG_IN1	8	TRIG_OUT1
9	GND	10	GND

J5-Channel 2

HDR Pin	Signal	HDR Pin	Signal
1	1553 CH 2A+	2	1553 CH 2B+
3	1553 CH 2A-	4	1553 CH 2B-
5	1553 SHIELD 2A	6	1553 SHIELD 2B
7	TRIG_IN2	8	TRIG_OUT2
9	GND	10	GND

J6- Channel 3

HDR Pin	Signal	HDR Pin	Signal
1	1553 CH 3A+	2	1553 CH 3B+
3	1553 CH 3A-	4	1553 CH 3B-
5	1553 SHIELD 3A	6	1553 SHIELD 3B
7	TRIG_IN3	8	TRIG_OUT3
9	GND	10	GND

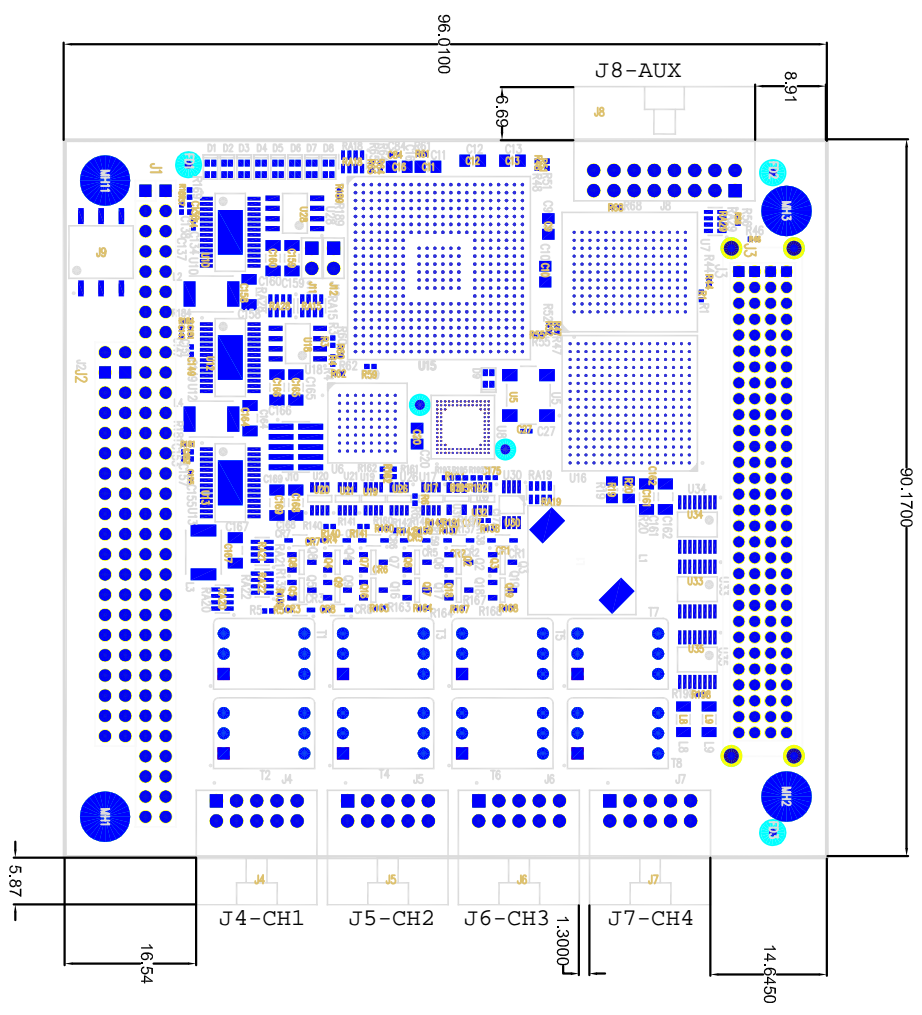
J7 – Channel 4

HDR Pin	Signal	HDR Pin	Signal
1	1553 CH 4A+	2	1553 CH 4B+
3	1553 CH 4A-	4	1553 CH 4B-
5	1553 SHIELD 4A	6	1553 SHIELD 4B
7	TRIG_IN4	8	TRIG_OUT4
9	GND	10	GND

J8-AUX

HDR Pin	Signal	HDR Pin	Signal
1	SDISC1 / RTADDR1_0	2	DDISC1+
3	SDISC2 / RTADDR1_1	4	DDISC1-
5	SDISC3 / RTADDR1_2	6	GND
7	SDISC4 / RTADDR1_3	8	GND
9	SDISC5 / RTADDR1_4	10	EXT CLOCK IN
11	SDISC6 / RTADDR1_P	12	GND
13	SDISC7	14	IRIG IN
15	SDISC8	16	IRIG IN GND

REVISION HISTORY		
REV	DESCRIPTION	DATE
A	INITIAL	10/08/07



NAME	DATE
PROJ. ENG.	
DRAWN	10/08/07

UNLESS OTHERWISE SPECIFIED:

<b>Alta vdt</b>	
Alta Data Technologies	
TITLE:	
<b>PC104P-1553</b>	
SIZE	DWG. NO.
A	
MATERIAL:	SEE NOTE 1

THIS DOCUMENT CONTAINS PROPRIETARY AND CONFIDENTIAL INFORMATION FOR ALTA DATA TECHNOLOGIES. IT IS NOT TO BE REPRODUCED, USED OR DISCLOSED FOR ANY PURPOSE WITHOUT THE WRITTEN REQUEST OF ALTA DATA TECH. THIS DOCUMENT SHALL BE RETURNED OR DESTROYED, THIS DOCUMENT AND ANY NON-DISCLOSURE AGREEMENT BETWEEN ALTA DATA TECH AND THE ENTITY TO WHICH IT WAS SENT.

DIMENSIONS ARE IN MM

REV A

SH 1 OF 1